



TEST REPORT

EN 62471:2008

Photobiological safety of lamps and lamp systems

Heytle
Horizon Group

Note:

FULLY APPROVED



Test item particulars

Lamp classification group.....:Risk Group 1

Possible test case verdicts

General remarks:

Remark:
Appendix A - EUT photos
Appendix B - Test equipment list

General Product Information:

| | | | |
|--|--|--|--|
| | | | |
| | | | |
| | | | |

FENVAL

| | | | | |
|--|--|----|----|--|
| | $L_B t = \frac{700}{300 t} L(\lambda, t) B(\lambda) t$ | -2 | -1 | |
| | $L_B = \frac{700}{300} L B(\lambda)$ | | | |
| | | | | |
| | | | | |
| | $E_B t = \frac{700}{300 t} E(\lambda, t) B(\lambda) t$ | -2 | | |
| | $E_B = \frac{700}{300} E B(\lambda)$ | | | |
| | | | | |
| | | | | |
| | $L_{IR} = \sum_{38}^{1400} \frac{R(\lambda) \cdot \Delta \lambda}{38} \leq \frac{50000}{t^{0.25}} \text{ W} \cdot \text{m}^{-2} \cdot \text{sr}^{-1}$ | | | |
| | | | | |
| | | | | |
| | $L_{IR} = \sum_{780}^{1400} L_{\lambda} \cdot R(\lambda) \cdot \Delta \lambda \leq \frac{6000}{\alpha} \text{ W} \cdot \text{m}^{-2} \cdot \text{sr}^{-1}$ | | | |
| | | | | |
| | | | | |
| | $E_{IR} = \sum_{780}^{3000} E_{\lambda} \cdot \Delta \lambda \leq 18000 \cdot t^{-0.75} \text{ W} \cdot \text{m}^{-2}$ | | | |
| | | | | |

$$E_{IR} = \sum_{\Delta z \leq 100} \frac{E_{\lambda} \Delta z}{780} \quad \text{W.m}^{-2}$$

FENVAL

| | | | |
|--|--|--|--|
| | | | |
|--|--|--|--|

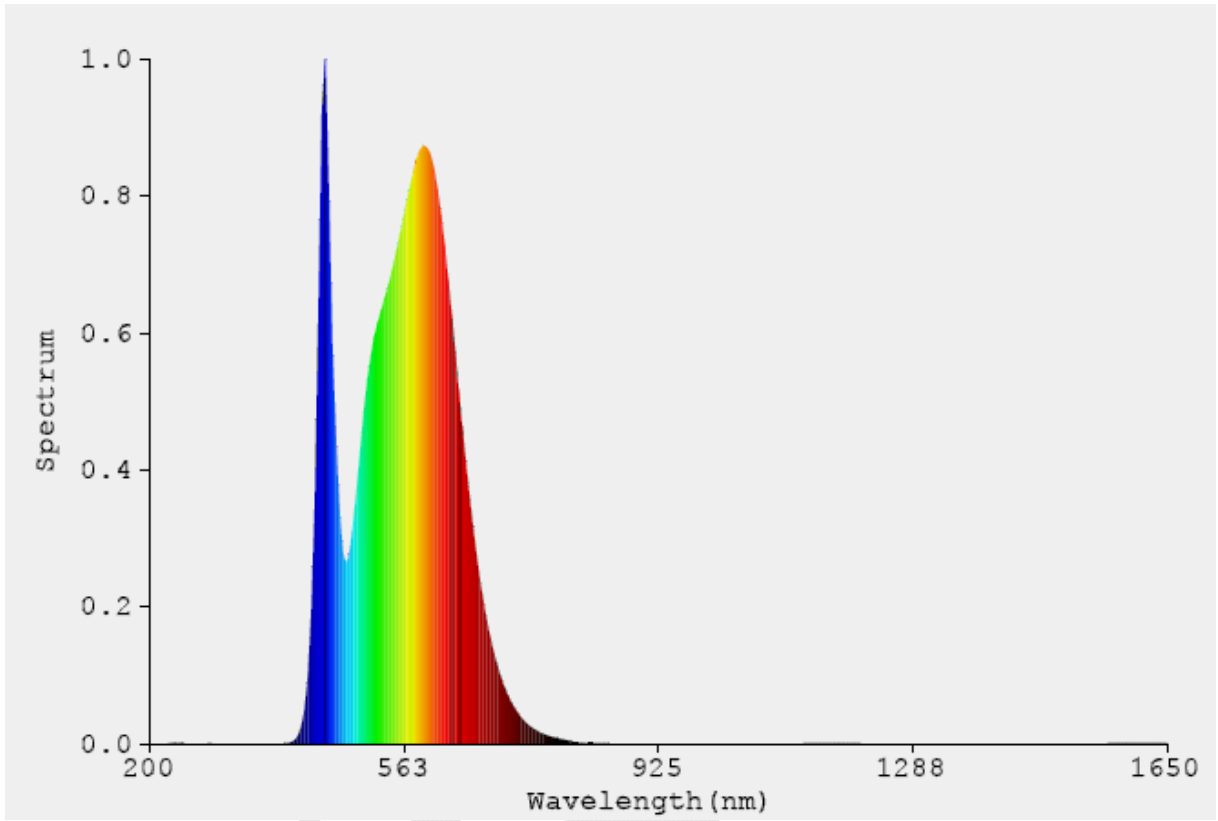
FENVAL

| Table 5.4 | | | | | - |
|-------------|-------------------|---------------------|-----------------------------|----------------------------|---|
| Hazard Name | Relevant equation | Wavelength Range nm | Explosure aperture rad(deg) | Limiting aperture rad(deg) | EL in items of constant irradiance $W.m^{-2}$ |
| | | | | | |
| | | | | | |
| | | | | | |
| | | | | | |
| | | | | | |

| Table 5.5 | | | | | - |
|-------------|-------------------|---------------------|------------------------|-----------------------|---|
| Hazard Name | Relevant equation | Wavelength Range nm | Explosure duration Sec | Field of view radians | EL in terms of constant radiance $W.m^{-2}.sr^{-1}$ |
| | | | | | |
| | | | | | |
| | | | | | |



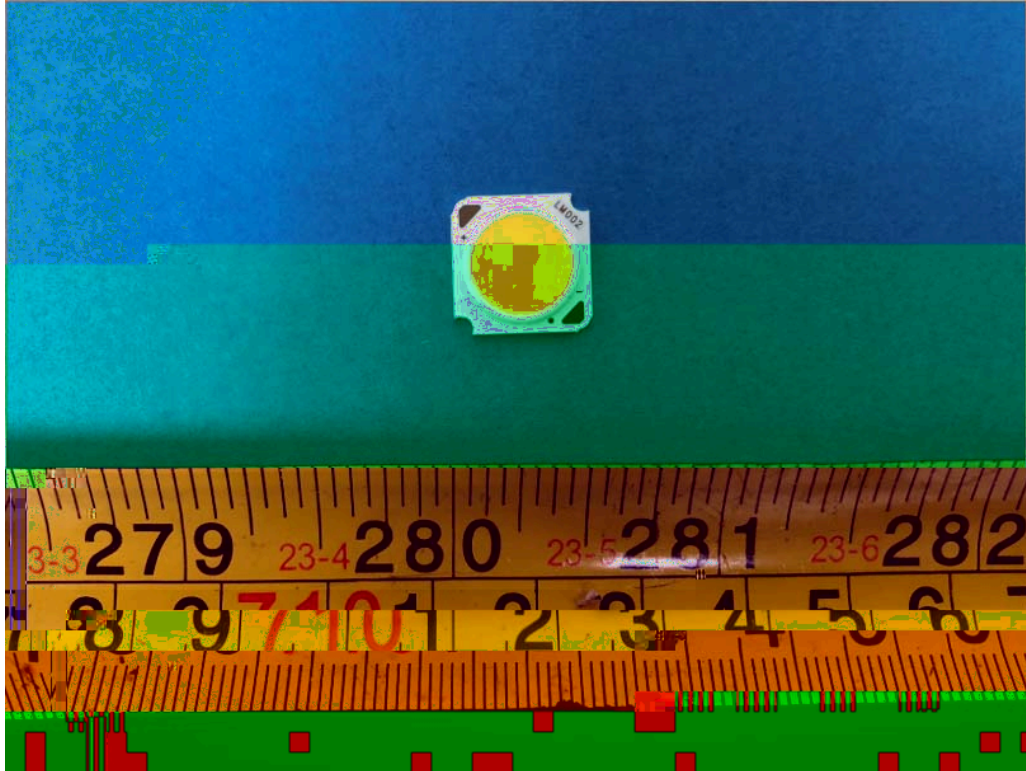
FEMVA



FBI



The front view of EUT



The back view of EUT



