

TEST REPORT

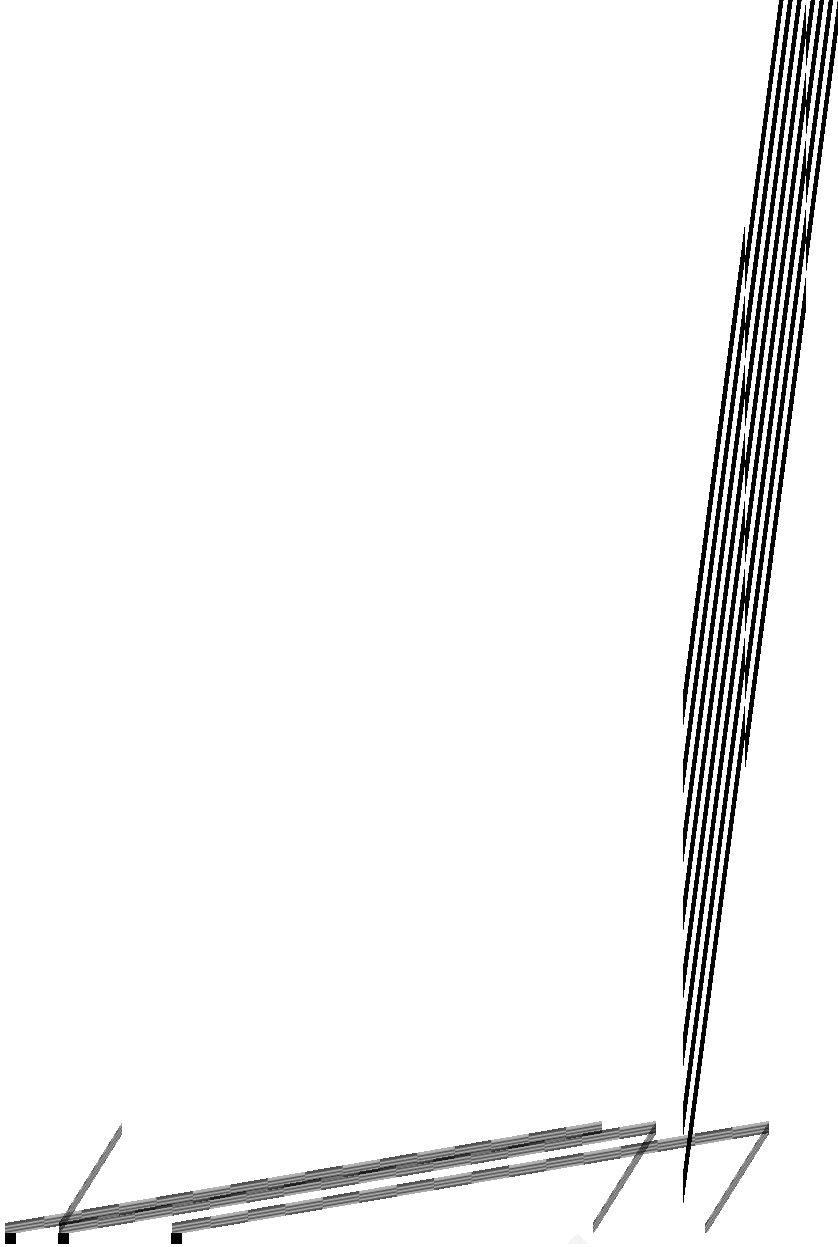
IEC TR 62778

Application of IEC 62471 for the assessment of blue light sources and luminaires

Report reference No	RSZ161229552-03
Compiled by (+ signature)	Zero Gao <i>Zero Gao</i>
Approved by (+ signature)	Harrison Huang <i>Harrison Huang</i>
Date of issue	2017-01-05
Testing laboratory	Bay Area Compliance Laboratories Corp.
Address	No.69, Pulongcun, Puxinhu Industry Zone Guangdong, China
Testing location	Same as above
Applicant	Hongli Zhihui Group Co.,Ltd.
Address	No.1, Xianke Yi Road, Huadong Town, H China
Standard	IEC TR 62778:2014 (Second Edition)
Test sample(s) received.....	2016-12-30
Test in period.....	2016-12-30~2017-01-05
Procedure deviation	N.A.
Non-standard test method	N.A.
Note: The test data was only valid for the test sample(s). This test report is prepared as shown above and for the specific product described herein. It must not be duplicated without prior written consent from Bay Area Compliance Laboratories Corp. (Dongguan).	
Type of test object	LED
Trademark	N.A.
Model/type reference	HL-A-2835H499W-S1-08L-HR3
Multiple Models.....	N.A.
Manufacturer.....	Hongli Zhihui Group Co.,Ltd. No.1, Xianke Yi Road, Huadong Town, H China
Rating	Input: 2.8-3.4Vdc, 60mA
Copy of marking plate:	None

Test item particulars	
Product evaluated	<input checked="" type="checkbox"/> LED package <input type="checkbox"/> LED module <input type="checkbox"/> Lamp <input type="checkbox"/> Luminaire
Rated voltage (V)	See rating
Rated current (mA)	See rating
Rated CCT (K)	See rating
Rated Luminance (Mcd/m²)	Not specified
Component report data used	<input checked="" type="checkbox"/> Not applicable <input type="checkbox"/> LED package <input type="checkbox"/> LED module <input type="checkbox"/> Lamp Report number:
Possible test case verdicts:	
-test case does not apply to the test object.....:N(.A.)	
-test object does meet the requirement.....:P(ass)	
-test object does not meet the requirement.....:F(ail)	
General remarks:	
<p>The test results presented in this report relate only to the object tested.</p> <p>This report shall not be reproduced, except in full, without the written approval of the Issuing testing laboratory.</p> <p>"(See Enclosure #)" refers to additional information appended to the report.</p> <p>"(See appended table)" refers to a table appended to the report.</p> <p>Throughout this report a point is used as the decimal separator.</p> <p>List of test equipment must be kept on file and available for review.</p> <p>Remark:</p> <p>This report consists of 7 pages and following appendixes:</p> <p>Appendix A EUT photos</p> <p>Appendix B Test equipment list</p>	
General product information:	
<p>This product is a LED and manufactured by "Hongli Zhihui Group Co.,Ltd.", Test model is HL-A-2835H499W-S1-08L-HR3. Rated input is 2.8-3.4Vdc, 60mA.</p>	

IEC TR 62778			
Clause	Requirement + Test	Result - Remark	Verdict
7	MEASUREMENT INFORMATION FLOW		P
7.1	Basic flow		P
	'Law of conservation of luminance' applied		P
	Use of only true luminance/radiance values		P
	In case of luminaire: The light source is operated in the luminaire under similar conditions as when tested as a component		P
	In case E_{thr} value for RG2 was established the peak value was derived from angular light distribution		N
7.2	Conditions for the radiance measurement		P
	Standard condition applied (200mm distance, 0,011rad field of view)		P
	Non-standard condition applied		N
7.3	Special cases (I): Replacement by a lamp or LED module of another type		N
	Light source is a white light source		N
	Evaluation done based on highest luminance		N
	Evaluation done based on CCT value		N
7.4	Special cases (II): Arrays and clusters of primary light sources		N
	LED package is evaluated as : <input type="checkbox"/> RG0 unlimited <input type="checkbox"/> RG1 unlimited <input type="checkbox"/> RG2 unlimited		N
	E_{thr} of LED package applies to array		N
8	RISK GROUP CLASSIFICATION		P
	Risk group achieved:		P
	- .. Risk Group 0 unlimited		N
	- .. Risk Group 1 unlimited		P
	- Risk Group 2 unlimited		N
	- E_{thr} (lx) : Distance to reach RG2(mm) :	1032 lx 79 mm	P



F



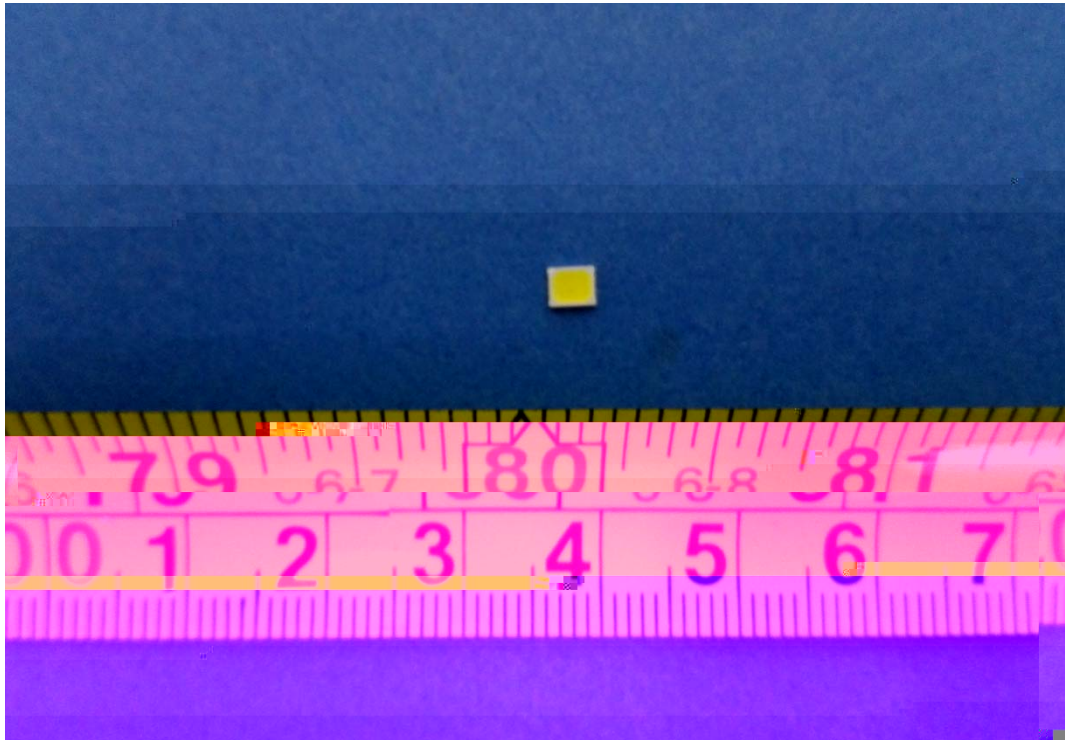
1



■

Appendix A - EUT Photos

The front view of EUT



The bottom view of EUT

